

WAKE™ PRO 230

Stability, power and music
to tow like a pro.

KEY FEATURES

- Rotax® 1630 ACE™ - 230
- ST3™ Hull
- Tech Package: BRP Audio - premium system & Full color 7.8" wide display, USB port
- iDF - Intelligent Debris-Free Pump System
- iBR® - Intelligent Brake & Reverse*
- Watertight phone compartment
- Direct-access front storage
- Boarding ladder
- Wake Package: LinQ™ retractable ski pylon, speed-based ski mode, removable wakeboard rack, Wake™ graphics



 Sand / Dazzling Blue

iDF/iTC/iBR/ST3/CLCS/ECO

CAPACITY

| | |
|--------------------------|--------|
| Rider capacity | 3 |
| Weight capacity | 272 kg |
| Fuel capacity | 70 L |
| Glove box | 2.9 L |
| Front bin | 96 L |
| Storage capacity - Total | 98.9 L |

DIMENSIONS

| | |
|---------------------------|---------------------|
| Length (bumper to bumper) | 345 cm |
| Width | 125.5 cm (w/o rack) |
| Height | 114 cm |

HULL

| | |
|----------|------------|
| Type | ST3™ Hull |
| Material | Fiberglass |

OTHER FEATURES

| | |
|-----------------------------|-----------------------------|
| Ergolock™ two-piece seat | Handle Grips with palm rest |
| Seat strap | Footwell carpets |
| VTS™ (Variable Trim System) | Large swim platform |
| RF D.E.S.S.™ key | USB Port |
| LinQ™ attachment system | Tilt steering |
| Wide-angle mirrors | Ski tow eye |

ROTAX ENGINE

1630 ACE™ - 230

| | |
|-----------------|--|
| Intake system | Supercharged with external intercooler |
| Displacement | 1,630 cc |
| Cooling | Closed-Loop Cooling System (CLCS) |
| Reverse system | Electronic iBR** |
| Starter | Electric |
| Fuel type | 95 octane |
| Throttle system | iTC™ (Intelligent Throttle Control) |
| Exhaust System | D-Sea-Bel™ system |

GAUGE

| | | |
|-------------------|---------------------------------------|-------------------|
| Type of gauge | Large panoramic 7.8" wide LCD display | |
| Main functions | BRP Connect | Clock |
| | Music | VTS™ |
| | Navigation | Fuel consumption |
| | Bluetooth [†] connectability | Fuel autonomy |
| | Speedometer | Water temperature |
| iTC System - mode | RPM | Vehicle hours |
| | Sport mode | Speed regulator |
| | ECO® mode | Ski mode |
| | Slow mode | |

WEIGHT

| | |
|------------------------------------|--------|
| Dry weight (oil, coolant, no fuel) | 379 kg |
| Power to weight ratio (HP / lbs) | 0.28 |

WARRANTY

BRP limited warranty covers the watercraft for two years.



FEATURE HIGHLIGHTS



Tech Package

Levels up entertainment and functionality on the water. It includes a factory-installed, truly waterproof Bluetooth† audio system, a 7.8" color display and a usb port.



LinQ™ retractable ski pylon

A quick install retractable ski pylon that stows away when not in use. Features spotter hand grips and rope storage.



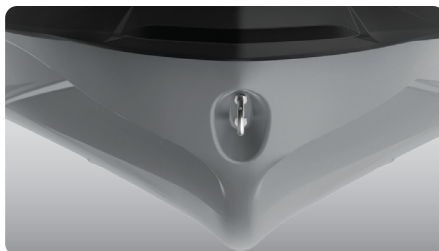
Wakeboard rack

Provides convenient storage and transport of a wakeboard.¹



ROTAX® 1630 ACE™ - 230 ENGINE

This powerful engine comes standard with a supercharger and external intercooler. It is optimized to run on regular fuel, which lowers fuel costs.



ST3™ Hull

An innovative hull that sets the benchmark for rough water handling, stability, and offshore performance.⁴



Direct-Access Front Storage

All your gear within arm's reach thanks to a 96 L front storage area, easily accessible from a seated position. Simply raise the handlebars to access essentials for any adventure.

¹ Wakeboard and rope not included. Wake Pro 230 shown.

